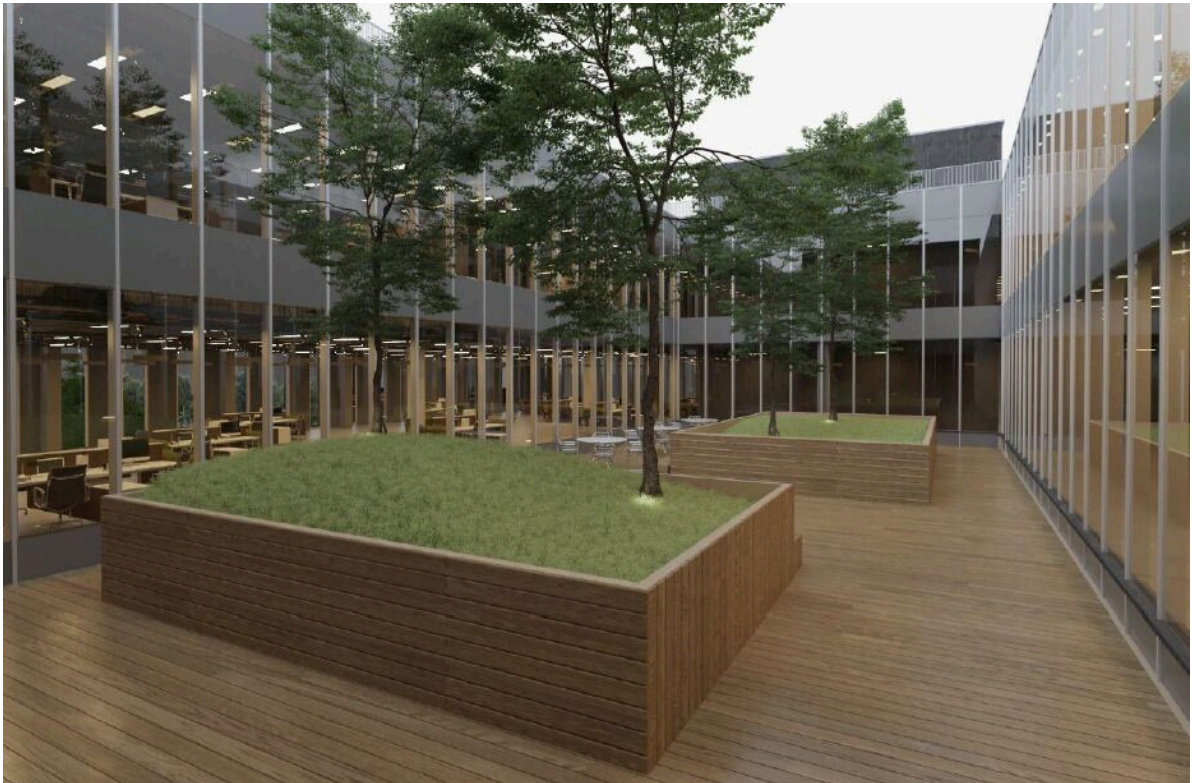


For rent: Office space



Rue Emma-Kammacher 11
1217 Meyrin
Reference: EK11 - Attique

FOR RENT: OFFICE SPACE

CHF 250.-/m² / year + ch.

CH-1217 Meyrin, Rue Emma-Kammacher 11



Description

Unique opportunity to rent space in a modern, well-located building, ideal for logistics and industrial activities.

Key features:

- Total surface area: 3,800 m² (mixed surfaces)
- Loading bays: 11
- Goods elevators: Yes
- Parking spaces: 90 (available in basement)
- Ceiling height: 3 m
- Floor load: 300 kg
- Accessibility :
 - 5 min from A1 freeway
 - 10 min from international airport
 - 15 min from downtown Geneva
 - 5 min walk from Meyrin train station
 - Upcoming bus stop just opposite the building

Rental conditions :

- Rent : CHF 250.-/m²/year excl.
- Service charges: CHF 40.-/m²/year
- Basement parking: CHF 200.-/space/month
- Surfaces delivered unfinished with technology ready to enter.

Availability :

- Start of construction: Q4 2022
- Surface delivery: Q1 2025

Contact for visiting

Rent department

E-mail : GeranceGE@vpi-sa.ch
Phone : +41 58 590 30 30

Characteristics

- Reference : EK11 - Attique
- Type : Office space
- Floor : Attic
- Useful surface : 3800 m²
- Price/m² : CHF 250.-/m² (/year)
- Year of construction : 2025
- Service costs/m² : CHF 40.-/year
- Availability : Winter 2024

Characteristics

Reference	EK11 - Attique	Floor	Attic
Useful surface	3800 m ²	Price/m ²	CHF 250.-/m ² (/ year)
Year of construction	2025	Availability	Winter 2024
Service costs/m ²	CHF 40.-/year		

Conveniences

Neighbourhood

- Industrial zone
- Railway station
- Bus stop
- Highway entrance/exit

Outside conveniences

- Parking
- Loading dock

Pictures



