

ETOY - 72 m2 warehouse in the iLife City center

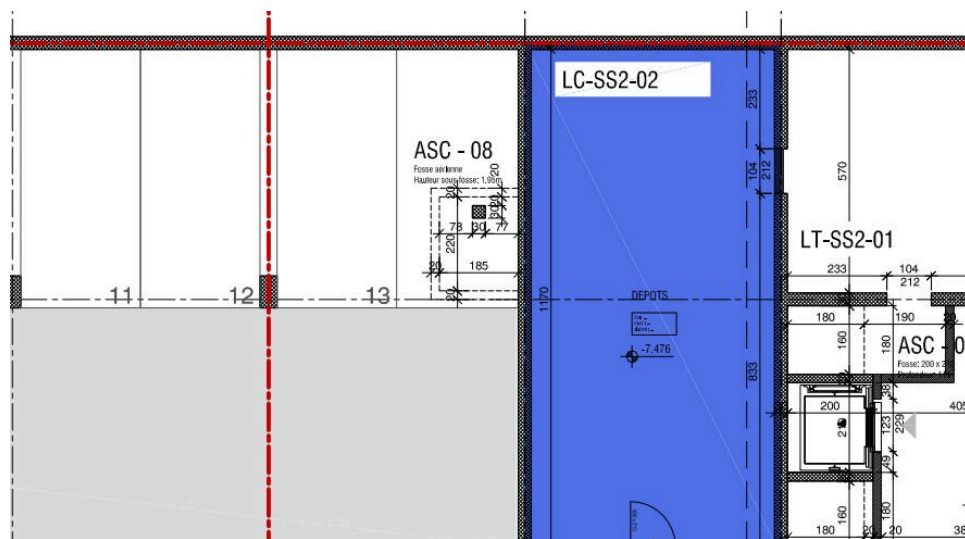


Centre iLife
Reference: iLife - dépôt de 72m2 - 900001.420004.12

ETOY - 72 M2 WAREHOUSE IN THE ILIFE CITY CENTER

CHF 660.- / month + ch.

CH-1163 Etoy, Centre iLife



Description

This 72 m2 warehouse is located in the iLife City center in Etoy.

The space is not partitioned and can be used for shelf storage.

It is equipped with a single door, and a freight elevator is located some fifty meters away.

The warehouse is located in the 2nd basement, with a maximum vehicle height of 2m40.

Available immediately.

Please do not hesitate to contact us for further information or to arrange a viewing on 058 590 30 60

Characteristics

Reference : iLife - dépôt de 72m2 -

900001.420004.12

Type : Depot

Floor : 1st basement

Useful surface : 72 m²

Year of construction : 2016

Service costs : Not included

Availability : Immediate

Contact for visiting

Mrs. Gérance VAUD

E-mail : gerancevd@vpi-sa.ch

Phone : +41 58 590 30 60

Characteristics

Reference	iLife - dépôt de 72m2 - 900001.42000- 4.12	Floor	1st basement
Useful surface	72 m ²	Year of construction	2016
Energy efficiency	A	Availability	Immediate
Service costs	Not included	Parking places	Yes, optional

Distances

Train station	500 m	Highway	2 km
---------------	-------	---------	------

Conveniences

Neighbourhood

- Industrial zone
- Railway station
- Bus stop
- Highway entrance/exit

Condition

- Good

Outside conveniences

- Greenery
- Covered parking space(s)
- Parking

Standard

- Minergie®

Inside conveniences

- Wheelchair-friendly
- Lift/elevator
- Service elevator
- Underground car park

Miscellaneous

- With full-time caretaker job

Equipment

- Caretaker

Architectural floor plan of a building section. The plan shows a grid system with columns 11, 12, 13 and rows 94, 95. Key areas include:

- LC-SS2-02**: A large blue rectangular area.
- LT-SS2-01**: A smaller blue rectangular area.
- ASC - 08**: A room with a "Fosse sanitaire" (sanitary pit) and a "Hauteur sous-plancher: 1.00" (floor-to-floor height: 1.00).
- ASC**: A room with a "Fosse" (pit) and a "200 x 80" (200 x 80) dimension.
- DEPOTS**: A room with a "7.476" elevation and a "104" dimension.

Dimensions and elevations are provided for various points and areas. The plan also shows a "Fosse" (pit) and a "200 x 80" (200 x 80) dimension.

